

Speech Pathologist

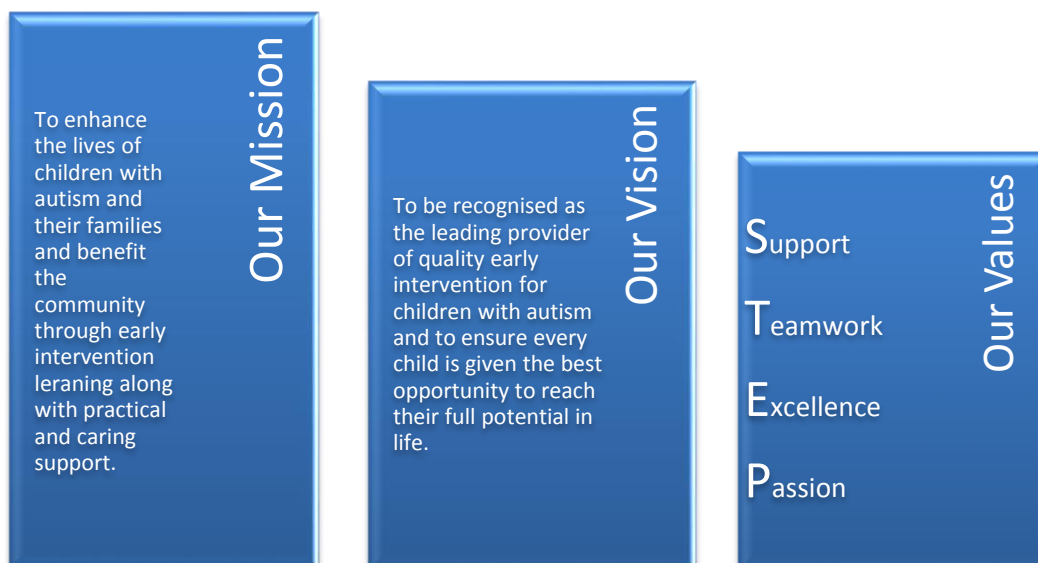
Location	AEIOU Service		
Essential Qualification(s)	Bachelor in Speech Pathology or equivalent	Essential licence(s)	Ability to obtain Positive blue card Must hold Speech Pathology Australia membership
Classification	EBA	Probationary Period	3 months
Position resources	2x uniform shirts	Annual Leave	5 weeks
Delegation of Duties:	Service Manager	Authorities in your absence:	Service Manager

AEIOU Foundation

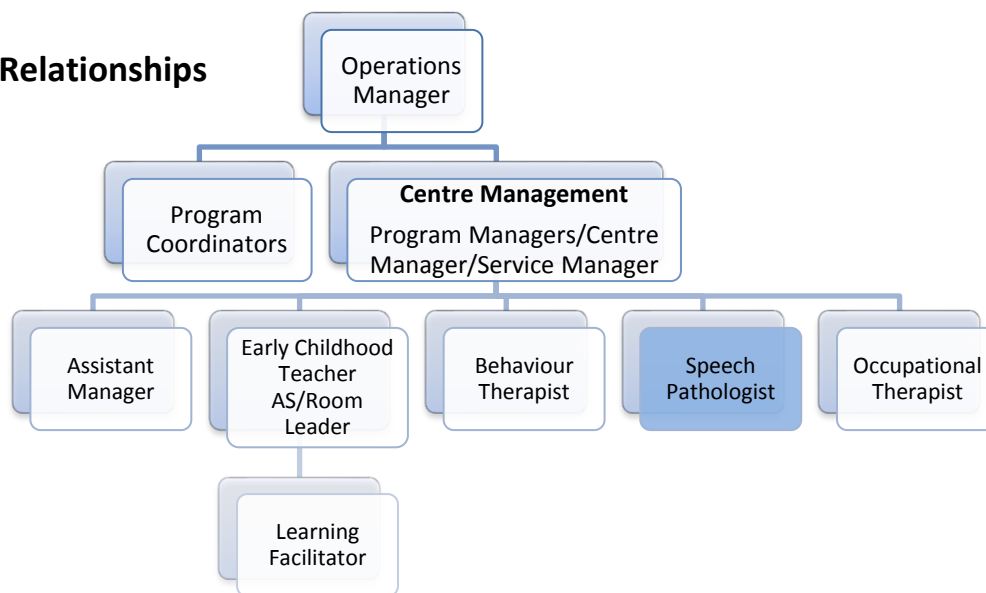
AEIOU Foundation's evidence-based intensive early intervention program provides opportunities for children with autism to achieve lifelong outcomes.

Our program is designed for children aged 2 to 6 years who have moderate to severe needs. Our curriculum, which meets international standards, is delivered by a transdisciplinary team of qualified therapists and educators, with a high staff-to-child ratio.

AEIOU Foundation is proud to employ highly qualified and experienced staff across our centres and we are committed to maintaining and improving skills and knowledge through a rigorous professional development program.



Reporting Relationships



Other key relationships include the wider AEIOU team, children, parents, families and carers.

Position Purpose

The role of speech pathologist at AEIOU operates within an early learning framework and provides specialist therapy support for children with autism spectrum disorder, their families and carers.

Responsibilities

- | | |
|---|---|
| <ul style="list-style-type: none"> • Administer assessments as appropriate within the discipline to identify the nature of each child's developmental needs • Develop and implement intervention programs as appropriate within the discipline that assist the child with autism to maximise their participation in order to enhance their independence and quality of life • Monitor, evaluate and review the implementation of programs against set goals according to Individual Plans • Participate in the development, implementation and review of training programs for staff, families, carers and the wider community • Develop resources to support the implementation of strategies across the AEIOU Curriculum program. • Undertake appropriate professional development, including regular supervision sessions reflecting on own practice and identify ways to consolidate or improve practice • To work collaboratively within a multi-disciplinary team to deliver best practice early intervention for children with autism | <ul style="list-style-type: none"> • If required, to undertake research into examples of good practice and utilise these to develop AEIOU practice • To contribute to the review and continuous improvement activities of the organisation • Support parents to access external agencies where indicated e.g. during transition to school • Participate in activities including parent forums, parent education evenings and autism awareness activities <p>If co-ordinator role:</p> <ul style="list-style-type: none"> • Provide clinical supervision to speech pathology team at each service via phone • Coordinate training days and relevant speakers • Coordinate speech pathology meetings • Assist the Centre Manager with the interview and recruitment process for new speech pathologists within the organisation. • Assist with curriculum review and associated documents |
|---|---|

Organisational Responsibilities

- | | |
|---|--|
| <ul style="list-style-type: none">• To comply with all AEIOU policies and procedures at all times• A commitment to meeting and exceeding child, family & carers' expectations• To adopt and embrace AEIOU's values• To recognise and acknowledge the constraints that affect AEIOU and assist in making in necessary changes• To ensure the environment is kept in a safe and hygienic state at all times | <ul style="list-style-type: none">• To promote AEIOU to the local and wider communities• A commitment to work as an effective team member• To assist team members in understanding and responding to challenges, change and conflict• To ensure that all communication is completed in a professional and polite manner• To follow and practice correct fire and emergency evacuation procedures |
|---|--|

Key selection criteria

- | | |
|--|--|
| <ul style="list-style-type: none">• Bachelor of Speech Pathology or equivalent• Membership with Speech Pathology Australia• Demonstrated ability to provide speech therapy services for children with autism in an early intervention setting• Ability to participate in the development, implementation and review of training programs for staff, families and carers | <ul style="list-style-type: none">• Demonstrated commitment to continuing professional and personal development• Strong written & oral communication skills together with a strong customer service focus• Ability to acquire knowledge of the AEIOU program, curriculum and Disability Services Standards |
|--|--|