

Early Childhood Teacher			
Location	AEIOU Serice		
Essential Qualification(s)	Approved ACECQA Bachelor of Education (Early Childhood) or equivalent Early Childhood qualification	Essential licence(s)	QLD: Ability to obtain Positive blue card QCOT registration (if required to meet QKFS) SA: Must hold SA Teacher registration Current first aid certificates
Classification	EBA	Probationary Period	3 months
Position resources	2 x Uniform Shirts	Annual Leave	5 weeks
Delegation of Duties:	Service Manager	Authorities in your absence:	Service Manager

AEIOU Foundation

AEIOU Foundation’s evidence-based intensive early intervention program provides opportunities for children with autism to achieve lifelong outcomes.

Our program is designed for children aged 2 to 6 years who have moderate to severe needs. Our curriculum, which meets international standards, is delivered by a transdisciplinary team of qualified therapists and educators, with a high staff-to-child ratio.

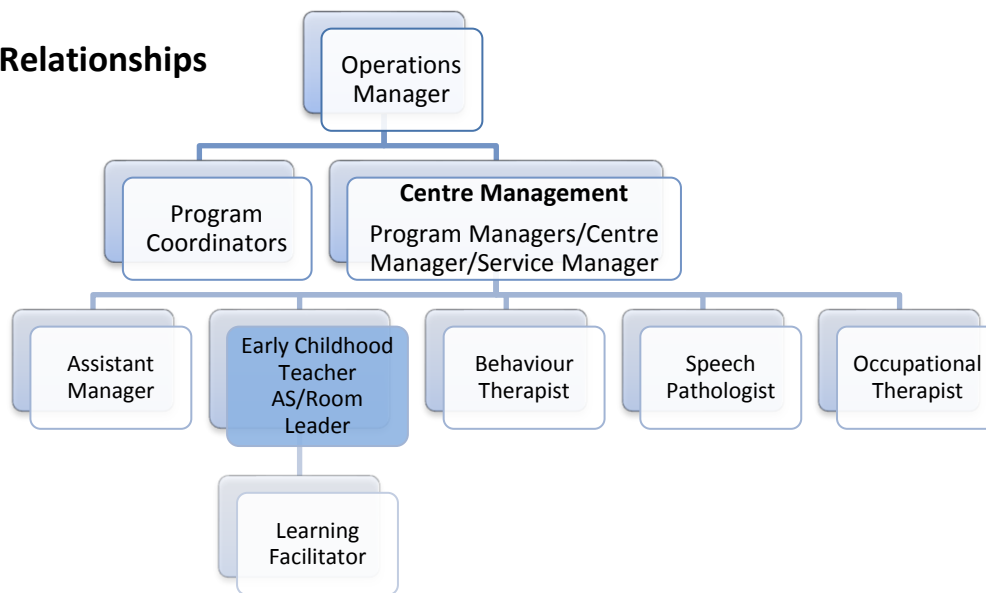
AEIOU Foundation is proud to employ highly qualified and experienced staff across our centres and we are committed to maintaining and improving skills and knowledge through a rigorous professional development program.

Our Mission
 To enhance the lives of children with autism and their families and benefit the community through early intervention learning along with practical and caring support.

Our Vision
 To be recognised as the leading provider of quality early intervention for children with autism and to ensure every child is given the best opportunity to reach their full potential in life.

Our Values
 Support
 Teamwork
 Excellence
 Passion

Reporting Relationships



Other key relationships include the wider AEIOU team, children, parents, families and carers.

Position Purpose

The teacher is responsible for taking a leadership role in the development and implementation of a quality education and program for young children with an autism spectrum disorder, their families and carers.

Responsibilities

- | | |
|--|--|
| <ul style="list-style-type: none"> • Work according to all of AEIOU's policies, procedures and standards • Develop and maintain for the provision and implementation of high quality educational programs, working closely with the therapy team • Implement the AEIOU program, Early Years Learning Framework and the Queensland Kindergarten Curriculum Guidelines and ensure documentation reflects each child's learning • Demonstrate an understanding of autism • Act as the Certified Supervisor for the centre Service in the absence of the Manager (See Note) • Support all educators to work according to AEIOU's program and philosophy • In conjunction with the therapy team, develop IPs and behavioural plans in collaboration with families and relevant external services. Consult with the therapy team to include individualised therapeutic goals and objectives. • Mentor, coach and work with all educators to meet the requirements of their position descriptions • Oversee the supervision of student teachers within the service • Develop and maintain open and collaborative relationships with all families • Encourage and support parent participation within the service | <ul style="list-style-type: none"> • Act as an advocate for children with autism and early childhood leadership within the service and the wider community • Participate in developing an appropriate early intervention program for children with ASD, particularly in regards to meeting students' individual development needs, IP goals and behavioural plans • Be committed to ongoing learning about ASD and implementing evidence based strategies • To adopt and embrace the organisation's values • To ensure the environment is kept in a safe and hygienic state at all times • A commitment to work as an effective team member • To assist team members in understanding and responding to challenges, change and conflict • To ensure that all communication is completed in a professional and polite manner • To participate in research activities and ongoing Professional Development, maintaining currency in developments in Special Education and in the field of autism • To develop learning resources to support the learning activities • To attend and participate in; Parent Forum meetings, parent education evenings and fundraising activities as required • To assist or support other centres when the need arises • To support children in their transition to new education settings |
|--|--|

Organisational Responsibilities

<ul style="list-style-type: none">• To comply with all AEIOU policies and procedures at all times• A commitment to meeting and exceeding customer expectations• To adopt and embrace the organisation's values• To recognise and acknowledge the constraints that affect AEIOU and assist in making necessary changes• To ensure the environment is kept in a safe and hygienic state at all times	<ul style="list-style-type: none">• To promote AEIOU to the local and wider communities A commitment to work as an effective team member• To assist team members in understanding and responding to challenges, change and conflict• To ensure that all communication is completed in a professional and polite manner• To follow and practice correct fire and emergency evacuation procedures• Consider Workplace, Health & Safety at the service at all times
--	--

Key Selection Criteria

<ul style="list-style-type: none">• Early childhood qualification must be on the ACECQA approval list http://www.acecqa.gov.au/Qualifications.aspx• Relevant teaching experience in early childhood settings• Experience in working with children with an ASD preferable or willingness to learn ASD specific techniques• A well-developed understanding of theories of early childhood development and current research and theories impacting on the profession• Demonstrated ability to develop, plan and implement a high quality, educational and child centred program, meeting the needs of individual children and the group	<ul style="list-style-type: none">• Ability to mentor and support others in the provision of appropriate educational and care programs High level of written and oral communication skills• Demonstrated leadership ability with small and larger teams• Ability to relate to individuals of various ages, and social and cultural backgrounds• A commitment to continuing professional and personal development
---	---