

Speech Pathologist

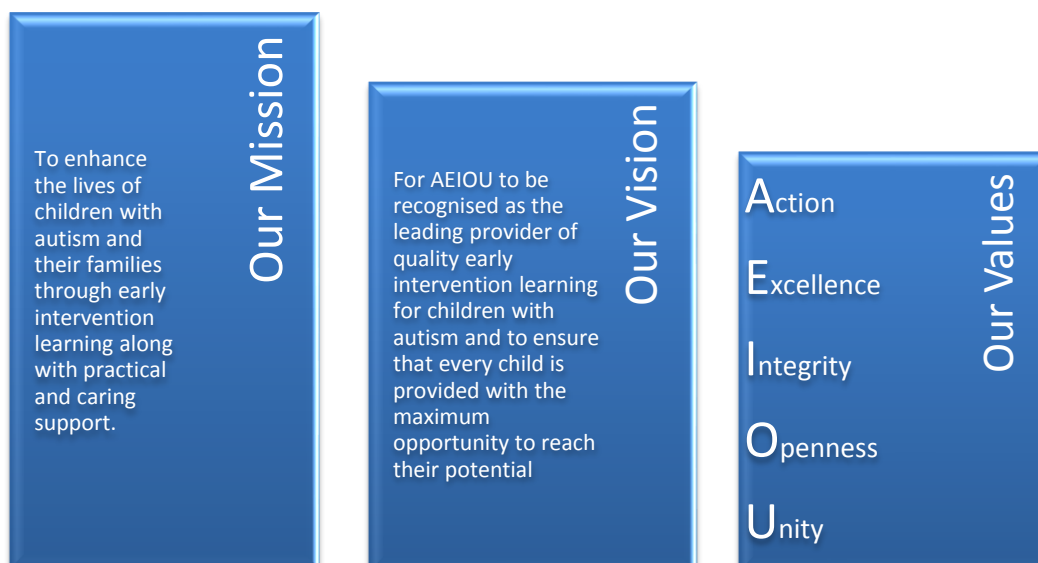
Location	AEIOU Service	Essential Qualification(s)	Bachelor in Speech Pathology or equivalent
Tenure and Status	Permanent Full time, Part-time or Fixed term contract	Essential licence(s)	Ability to obtain Blue Card (Positive Notice) Member of Speech Pathology Australia
Classification	EBA	Probationary Period	3 months
Position resources	2 x Uniform Shirts	Annual Leave	5 weeks
Delegation of Duties:	Centre Manager	Authorities in your absence:	Centre Manager

AEIOU Foundation

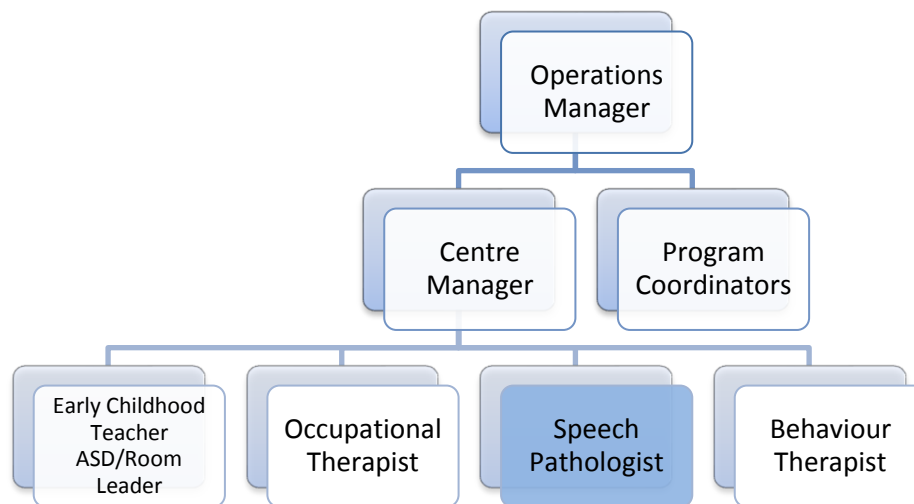
The AEIOU Foundation is a not-for-profit organisation and one of Australia's leading providers of full-time and part-time early intervention for children who have been diagnosed with an autism spectrum disorder who are aged 2 ½ to 6 years. AEIOU provides the only service of its kind in Queensland, delivering a curriculum which has been specifically developed to meet the individual needs and strengths of each child.

At AEIOU, children are supported by a range of professionals, including skilled learning facilitators, early childhood teachers, speech pathologists and occupational therapists. The program is also supported by a dedicated research and psychology team.

AEIOU is recognised for its work with the broader community to raise awareness, improve service delivery and for providing an evidence based early intervention program which meets the 2012 Australian Good Practice Guidelines. The Foundation is committed to delivering a high quality service, and improving the way we operate and work together.



Reporting Relationships



Other key relationships include the wider AEIOU team, children, parents, families and carers.

Position Purpose

The role of speech pathologist at AEIOU operates within an early learning framework and provides specialist therapy support for children with autism spectrum disorder, their families and carers.

Responsibilities

- | | |
|---|--|
| <ul style="list-style-type: none">• Administer assessments as appropriate within the discipline to identify the nature of each child's developmental needs• Develop and implement intervention programs as appropriate within the discipline that assist the child with autism to maximise their participation in order to enhance their independence and quality of life• Monitor, evaluate and review the implementation of programs against set goals according to Individual Plans• Participate in the development, implementation and review of training programs for staff, families, carers and the wider community• Develop resources to support the implementation of strategies across the AEIOU Curriculum program.• Undertake appropriate professional development, including regular supervision sessions reflecting on own practice and identify ways to consolidate or improve practice• To work collaboratively within a multi-disciplinary team to deliver best practice early intervention for children with autism | <ul style="list-style-type: none">• If required, to undertake research into examples of good practice and utilise these to develop AEIOU practice• To contribute to the review and continuous improvement activities of the organisation• Support parents to access external agencies where indicated e.g. during transition to school• Participate in activities including parent forums, parent education evenings and autism awareness activities <p>To view performance competencies click here.</p> <p>If co-ordinator role:</p> <ul style="list-style-type: none">• Provide clinical supervision to speech pathology team at each service via phone• Coordinate training days and relevant speakers• Coordinate speech pathology meetings• Assist the Centre Manager with the interview and recruitment process for new speech pathologists within the organisation.• Assist with curriculum review and associated documents |
|---|--|

Organisational Responsibilities

<ul style="list-style-type: none">• To comply with all AEIOU policies and procedures at all times• A commitment to meeting and exceeding child, family & carers' expectations• To adopt and embrace AEIOU's values• To recognise and acknowledge the constraints that affect AEIOU and assist in making in necessary changes• To ensure the environment is kept in a safe and hygienic state at all times	<ul style="list-style-type: none">• To promote AEIOU to the local and wider communities• A commitment to work as an effective team member• To assist team members in understanding and responding to challenges, change and conflict• To ensure that all communication is completed in a professional and polite manner• To follow and practice correct fire and emergency evacuation procedures
---	--

Key selection criteria

<ul style="list-style-type: none">• Speech Pathologist with minimum 3 years experience (will consider new graduates based on undergraduate exposure and demonstrated interest in disability)• Membership with Speech Pathology Australia• Demonstrated ability to provide speech therapy services for children with autism in an early intervention setting• Ability to participate in the development, implementation and review of training programs for staff, families and carers	<ul style="list-style-type: none">• Demonstrated commitment to continuing professional and personal development• Strong written & oral communication skills together with a strong customer service focus• Ability to acquire knowledge of the AEIOU program, curriculum and Disability Services Standards
--	--