

### Speech Pathologist

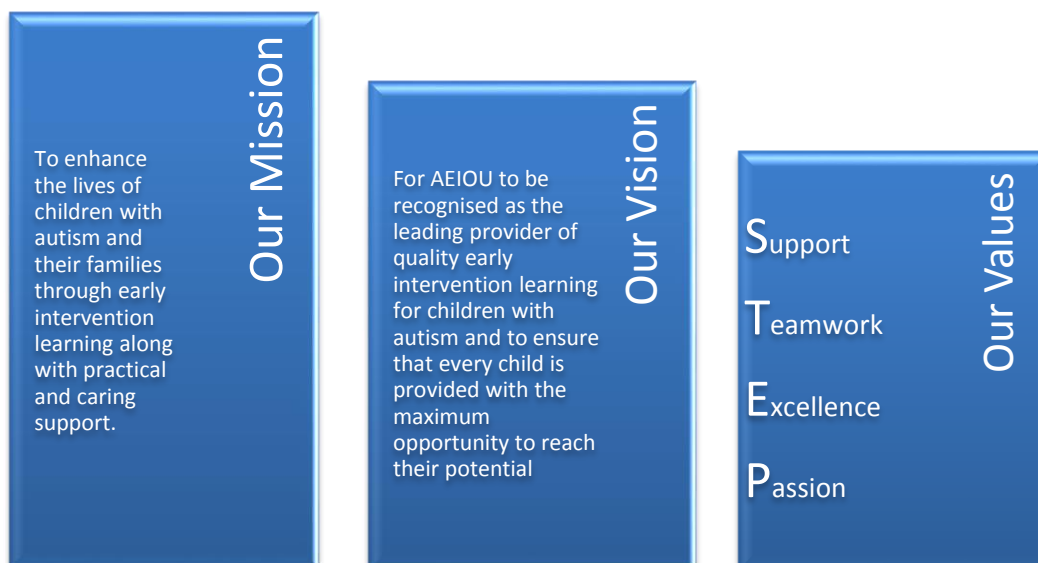
<b>Location</b>	AEIOU Service	<b>Essential Qualification(s)</b>	Bachelor in Speech Pathology or equivalent
<b>Tenure and Status</b>	Permanent Full time, Part-time or Fixed term contract	<b>Essential licence(s)</b>	Ability to obtain Blue Card (Positive Notice) Member of Speech Pathology Australia
<b>Classification</b>	EBA	<b>Probationary Period</b>	3 months
<b>Position resources</b>	2 x Uniform Shirts	<b>Annual Leave</b>	5 weeks
<b>Delegation of Duties:</b>	Centre Manager	<b>Authorities in your absence:</b>	Centre Manager

### AEIOU Foundation

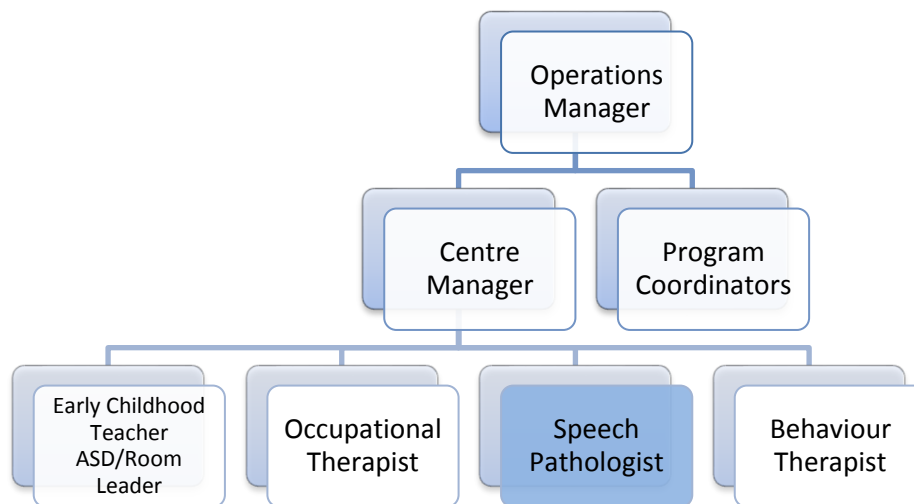
AEIOU Foundation's evidence-based intensive early intervention program provides opportunities for children with autism to achieve lifelong outcomes.

Our program is designed for children aged 2 to 6 years who have moderate to severe needs. Our curriculum, which meets international standards, is delivered by a transdisciplinary team of qualified therapists and educators, with a high staff-to-child ratio.

AEIOU Foundation is proud to employ highly qualified and experienced staff across our centres and we are committed to maintaining and improving skills and knowledge through a rigorous professional development program.



## Reporting Relationships



Other key relationships include the wider AEIOU team, children, parents, families and carers.

### Position Purpose

The role of speech pathologist at AEIOU operates within an early learning framework and provides specialist therapy support for children with autism spectrum disorder, their families and carers.

### Responsibilities

- |   |  |
|---|--|
| <ul style="list-style-type: none"><li>• Administer assessments as appropriate within the discipline to identify the nature of each child's developmental needs</li><li>• Develop and implement intervention programs as appropriate within the discipline that assist the child with autism to maximise their participation in order to enhance their independence and quality of life</li><li>• Monitor, evaluate and review the implementation of programs against set goals according to Individual Plans</li><li>• Participate in the development, implementation and review of training programs for staff, families, carers and the wider community</li><li>• Develop resources to support the implementation of strategies across the AEIOU Curriculum program.</li><li>• Undertake appropriate professional development, including regular supervision sessions reflecting on own practice and identify ways to consolidate or improve practice</li><li>• To work collaboratively within a multi-disciplinary team to deliver best practice early intervention for children with autism</li></ul> | <ul style="list-style-type: none"><li>• If required, to undertake research into examples of good practice and utilise these to develop AEIOU practice</li><li>• To contribute to the review and continuous improvement activities of the organisation</li><li>• Support parents to access external agencies where indicated e.g. during transition to school</li><li>• Participate in activities including parent forums, parent education evenings and autism awareness activities</li></ul> <p>To view performance competencies <a href="#">click here</a>.</p> <p><b>If co-ordinator role:</b></p> <ul style="list-style-type: none"><li>• Provide clinical supervision to speech pathology team at each service via phone</li><li>• Coordinate training days and relevant speakers</li><li>• Coordinate speech pathology meetings</li><li>• Assist the Centre Manager with the interview and recruitment process for new speech pathologists within the organisation.</li><li>• Assist with curriculum review and associated documents</li></ul> |
|---|--|

## Organisational Responsibilities

<ul style="list-style-type: none"><li>• To comply with all AEIOU policies and procedures at all times</li><li>• A commitment to meeting and exceeding child, family &amp; carers' expectations</li><li>• To adopt and embrace AEIOU's values</li><li>• To recognise and acknowledge the constraints that affect AEIOU and assist in making in necessary changes</li><li>• To ensure the environment is kept in a safe and hygienic state at all times</li></ul>	<ul style="list-style-type: none"><li>• To promote AEIOU to the local and wider communities</li><li>• A commitment to work as an effective team member</li><li>• To assist team members in understanding and responding to challenges, change and conflict</li><li>• To ensure that all communication is completed in a professional and polite manner</li><li>• To follow and practice correct fire and emergency evacuation procedures</li></ul>
---	--

## Key selection criteria

<ul style="list-style-type: none"><li>• Bachelor of Speech Pathology or equivalent</li><li>• Membership with Speech Pathology Australia</li><li>• Demonstrated ability to provide speech therapy services for children with autism in an early intervention setting</li><li>• Ability to participate in the development, implementation and review of training programs for staff, families and carers</li></ul>	<ul style="list-style-type: none"><li>• Demonstrated commitment to continuing professional and personal development</li><li>• Strong written &amp; oral communication skills together with a strong customer service focus</li><li>• Ability to acquire knowledge of the AEIOU program, curriculum and Disability Services Standards</li></ul>
--	--