

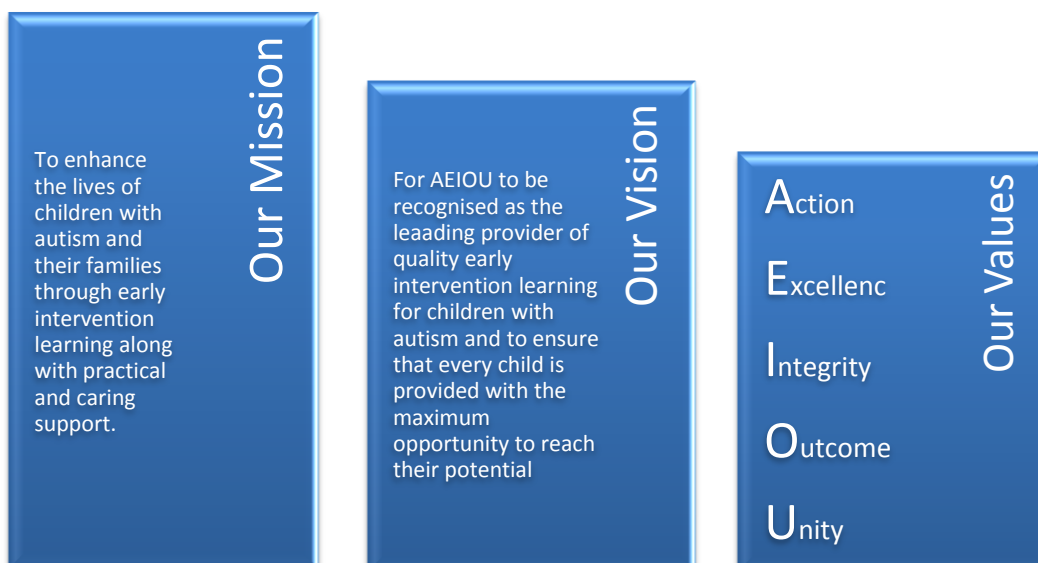
Occupational Therapist			
Location	AEIOU Services	Essential Qualification(s)	Current national registration as an Occupational Therapist
Tenure and Status	Permanent Full-time, Part-time or Fixed Term contract	Essential licence(s)	Queensland driver's licence Blue card (Positive Notice)
Classification	Award	Probationary Period	3 months
Position resources	2x uniform shirts, laptop	Annual Leave	5 weeks
Delegation of Duties:	Centre Manager	Authorities in your absence:	Centre Manager

AEIOU Foundation

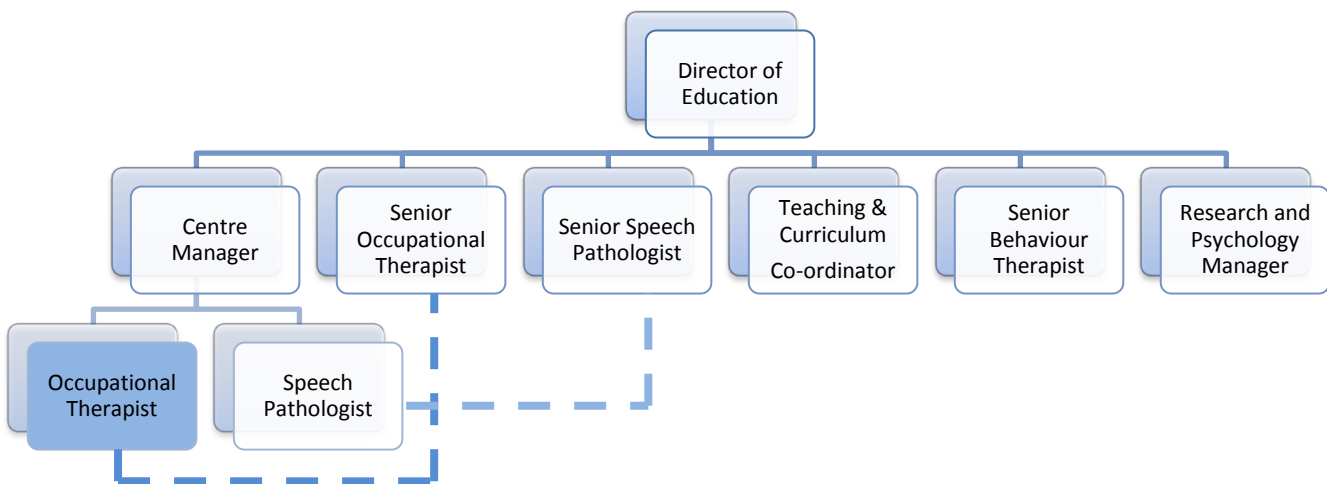
The AEIOU Foundation is a not-for-profit organisation and one of Australia's leading providers of full-time and part-time early intervention for children who have been diagnosed with an autism spectrum disorder who are aged 2 ½ to 6 years. AEIOU provides the only service of its kind in Queensland, delivering a curriculum which has been specifically developed to meet the individual needs and strengths of each child.

At AEIOU, children are supported by a range of professionals, including skilled learning facilitators, early childhood teachers, speech therapists and occupational therapists. The program is also supported by a dedicated research and psychology team.

AEIOU is recognised for its work with the broader community to raise awareness, improve service delivery and for providing an evidence based early intervention program which meets the 2012 Australian Good Practice Guidelines. The Foundation is committed to delivering a high quality service, and improving the way we operate and work together.



Reporting Relationships



Other key relationships include the wider AEIOU team, children, parents, families and carers.

Position Purpose

The role of Occupational Therapist at AEIOU operates within an early learning framework and provides specialist therapy support for children with autism spectrum disorder, their families and carers.

Position Responsibilities

- | | |
|---|---|
| <ul style="list-style-type: none"> • Administer assessments as appropriate within the discipline to identify the nature of each child's developmental needs • Develop and implement intervention programs as appropriate within the discipline that assist the child with autism to maximise their participation in order to enhance their independence and quality of life • Monitor, evaluate and review the implementation of programs against set goals according to Individual Plans • Participate in the development, implementation and review of training programs for staff, families, carers and the wider community • Develop resources to support the implementation of strategies across the AEIOU Curriculum program | <ul style="list-style-type: none"> • Undertake appropriate professional development, including regular supervision sessions reflecting on own practice and identify ways to consolidate or improve practice • To work collaboratively within a multi-disciplinary team to deliver best practice early intervention for children with autism • If required, to undertake research into examples of good practice and utilise these to develop AEIOU practice • To contribute to the review and continuous improvement activities of the organisation • Support parents to access external agencies where indicated e.g. during transition to school • Participate in activities including parent forums, parent education evenings and autism awareness activities • To view performance competencies click here. |
|---|---|

Organisational Responsibilities

- | | |
|---|--|
| <ul style="list-style-type: none"> • To comply with all AEIOU policies and procedures at all times • A commitment to meeting and exceeding child, family & carers' expectations • To adopt and embrace AEIOU's values • To recognise and acknowledge the constraints that affect AEIOU and assist in making in necessary changes • To ensure the environment is kept in a safe and hygienic state at all times | <ul style="list-style-type: none"> • To promote AEIOU to the local and wider communities • A commitment to work as an effective team member • To assist team members in understanding and responding to challenges, change and conflict • To ensure that all communication is completed in a professional and polite manner • To follow and practice correct fire and emergency evacuation procedures |
|---|--|

Key Selection Criteria

- | | |
|--|--|
| <ul style="list-style-type: none">• Current national registration as an Occupational Therapist in Australia• Demonstrated ability to provide occupational therapy services for children with autism in an early intervention setting• Ability to participate in the development, implementation and review of training programs for staff, families and carers | <ul style="list-style-type: none">• Demonstrated commitment to continuing professional and personal development• Strong written & oral communication skills together with a strong customer service focus• Ability to acquire knowledge of the AEIOU program, curriculum and Disability Services Standards |
|--|--|