

Learning Facilitator

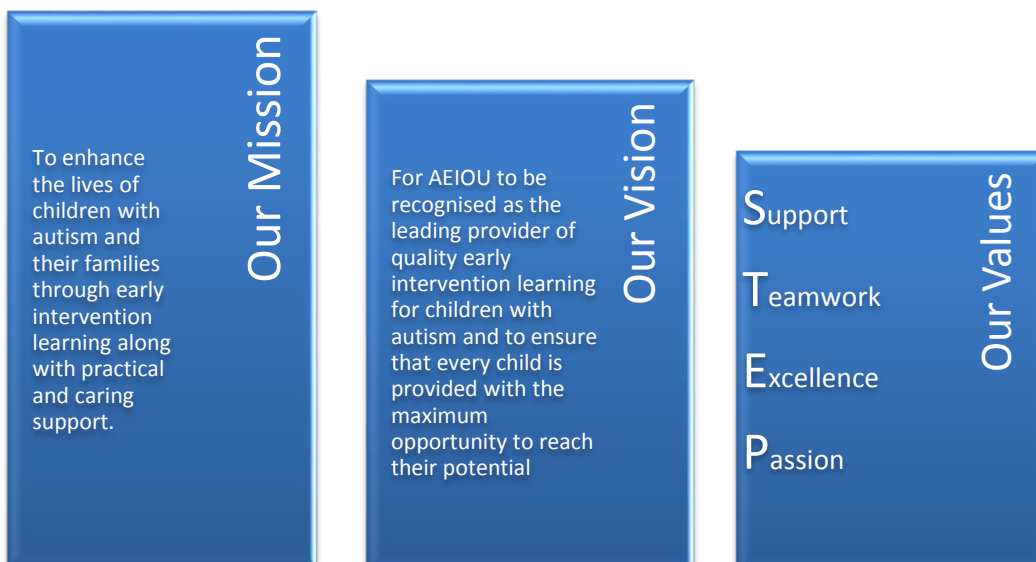
Location	AEIOU Services	Essential Qualification(s)	Minimum Cert III Children Services Diploma in Children Services (desirable) or studying towards one of the above
Tenure and Status		Essential licence(s)	Blue Card (Positive Notice) Current first aid, CPR, asthma & anaphylaxis If Diploma qualified, Supervisor Certificate
Classification	EBA	Probationary Period	3 months
Position resources	2x AEIOU Shirts	Annual Leave	5 weeks
Delegation of Duties:	Centre Manager	Authorities in your absence:	Centre Manager

AEIOU Foundation

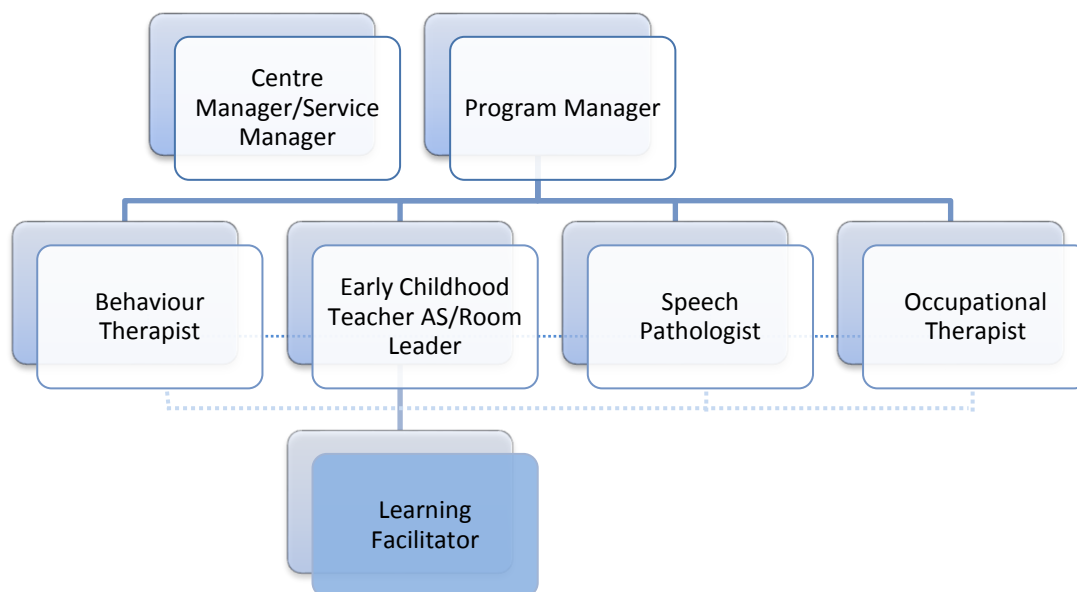
AEIOU Foundation’s evidence-based intensive early intervention program provides opportunities for children with autism to achieve lifelong outcomes.

Our program is designed for children aged 2 to 6 years who have moderate to severe needs. Our curriculum, which meets international standards, is delivered by a transdisciplinary team of qualified therapists and educators, with a high staff-to-child ratio.

AEIOU Foundation is proud to employ highly qualified and experienced staff across our centres and we are committed to maintaining and improving skills and knowledge through a rigorous professional development program.



Reporting Relationships



Other key relationships include the wider AEIOU team, children, parents, families and carers.

Position Purpose

The role of Learning Facilitator is to assist with the implementation of a high quality intervention program for children with autism spectrum disorder under the guidance of teachers and allied professionals, responding to the individual strengths and interests of children and families.

Position Responsibilities

- | | |
|--|---|
| <ul style="list-style-type: none"> • To work as a team member to provide a safe and stimulating environment for children’s learning, development and care • Contribute to an atmosphere of trust and professional respect through an attitude of openness, tolerance, constructive conflict resolution processes and maintenance of confidentiality • To support the centre staff with curriculum planning and behaviour strategies, including using agreed intervention techniques • To work as support to team to generate an environment that meets the individual needs of the individualised emotional, social, intellectual and physical needs of the children in the centre. • Acknowledge families as a valuable resource and develop positive relationships with them based on mutual respect and open communication • To understand and respect parents and children with different cultural and ethnic backgrounds to ensure that diversity is valued by the centre. • To contribute to arranging and maintaining the indoor/outdoor play areas in a visually stimulating, safe and hygienic condition | <ul style="list-style-type: none"> • To be able to assist in completing administrative and auditing tasks • To follow plans relating to children’s behaviour and individual plans, if required Maintain a professional approach to work, which reflects the centre’s philosophy, policies and procedures and ensures confidentiality in all aspects of the centre operations • Ensure that standards required by state regulations and national accreditation standards are adhered • To carry out duties as per daily rosters and routines • To participate in meetings if required • To undertake appropriate professional development • To contribute to the review and continuous improvement activities of the organisation • To contribute to the running of the centres, housekeeping and WHS • To demonstrate efficiency and high work ethic |
|--|---|

Organisational Responsibilities

- | | |
|---|--|
| <ul style="list-style-type: none">• To comply with all AEIOU policies and procedures at all times• A commitment to meeting and exceeding customer expectations• To adopt and embrace the organisation's values• To recognise and acknowledge the constraints that affect AEIOU and assist in making in necessary changes• To ensure the environment is kept in a safe and hygienic state at all times• To promote AEIOU to the local and wider communities | <ul style="list-style-type: none">• A commitment to work as an effective team member• To assist team members in understanding and responding to challenges, change and conflict• To ensure that all communication is completed in a professional and polite manner• To follow and practice correct fire and emergency evacuation procedures• Consider Workplace, Health & Safety at the service at all times |
|---|--|

Key Selection Criteria

- | | |
|--|--|
| <ul style="list-style-type: none">• Early childhood qualification must be on the ACECQA approval list
http://www.acecqa.gov.au/Qualifications.aspx• A developing understanding of theories of early childhood development• An ability to document observations of children's behaviour and development• Working knowledge of legislation that regulates long day care services• Working knowledge of National Quality Standards and Disability Standards• Knowledge and understanding of the EYLF and Kindergarten guidelines• Willingness to learn• Willingness to continue developing skills and study | <ul style="list-style-type: none">• A developing understanding of the provision of safe, well planned indoor and outdoor learning environments• An ability to work as an effective team member and to support the teacher/room leader and/or allied health professionals• Well-developed interpersonal oral and written communication skills• Experience in working with children with autism or willingness to learn |
|--|--|