

# AEIOU Research & Assessment Team

**AEIOU Foundation's** Research & Assessment Team conducts **research** and **standardised assessments** within AEIOU. Research and assessment is an important guide to understanding children and families' needs and strengths.

Our purpose is to integrate research and assessment outcomes of our children, to **inform the AEIOU curriculum**.

The number and type of research and assessments carried out across AEIOU centres does vary. Currently, we service a focus group of centres in Queensland, with the potential to roll out to other centres in the near future.

## Research:

AEIOU is involved in multiple research projects through data collection from children, parents and teachers at our centres. This data is used as the basis for the writing of evidence-based research papers.

We collaborate with many partners including Autism CRC (The Co-operative Research Centre for Living with Autism), Griffith University, and the University of Queensland.

We participate in projects such as clarifying the diagnosis of ASD, and developing evidence-based classroom interventions to support children with ASD.

## Assessment:

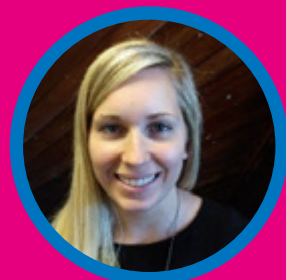
We conduct standardised assessments to:

- Measure children's abilities compared to children of a similar age
- Capture children's progress over time
- Use data in our research projects

Standardised assessments are conducted at intake, 12-monthly, and on transition.



**DR MADONNA TUCKER**  
Research and Assessment  
Manager



**SANDRA LARIVIERE**  
Assessment Coordinator



**ASHLEIGH SPECK**  
Research Administrator



**EMMA RILEY**  
Research Assistant



**MIRA FRENK**  
Research Assistant

For more information, or to be involved in our programs, please contact us:

**p. 07 3212 1106**

**e. [research@aeiou.org.au](mailto:research@aeiou.org.au)**

**a. 66 Hamilton Rd, Moorooka  
QLD 4105**

**aeiou**  
FOUNDATION  
for children with autism

**[aeiou.org.au](http://aeiou.org.au)**