

Research Assistant – 1 x Fixed Term Full-time; 2 x Permanent Part-time

Location	AEIOU Central Office		
Essential Qualification(s)	Bachelor degree (honours) in psychology, special education or allied health	Essential licence(s)	Current C-Class driver’s licence Ability to obtain Positive blue card
Classification	AEIOU 2016 Enterprise Agreement	Probationary Period	3 months
Delegation of Duties:	Research and Assessment Manager	Authorities in your absence:	Research and Assessment Manager

AEIOU Foundation

AEIOU Foundation’s evidence-based intensive early intervention program provides opportunities for children with autism to achieve lifelong outcomes.

Our program is designed for children aged 2 to 6 years who have moderate to severe needs. Our curriculum, which meets international standards, is delivered by a transdisciplinary team of qualified therapists and educators, with a high staff-to-child ratio.

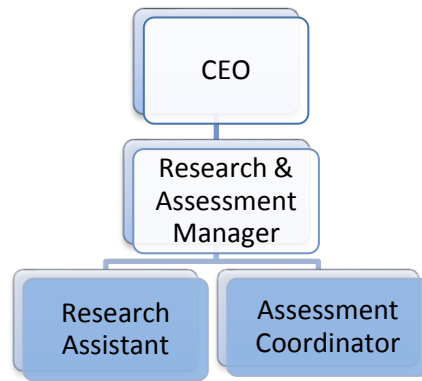
AEIOU Foundation is proud to employ highly qualified and experienced staff across our centres and we are committed to maintaining and improving skills and knowledge through a rigorous professional development program.

Our Mission
 To enhance the lives of children with autism and their families through early intervention learning along with practical and caring support.

Our Vision
 For AEIOU to be recognised as the leading provider of quality early intervention learning for children with autism and to ensure that every child is provided with the maximum opportunity to reach their potential

Our Values
 Action
 Excellence
 Integrity
 Openness
 Unity

Reporting Relationships



Other key relationships include AEIOU Centre Managers, AEIOU staff, children, families, the research team, and the broader community.

Position Purpose

The position will work as a member of the research team to assist to conduct assessment and research, relevant to the provision of early learning and care to children with autism.

Position responsibilities

- | | |
|---|---|
| <ul style="list-style-type: none"> • Develop and maintain links with AEIOU staff, children, families and the broader research community • Assist with coordination of current research projects • Conduct a range of assessments with young children with ASD, and report on the assessment results both in writing and verbally to staff and families as required | <ul style="list-style-type: none"> • Maintain assessment and research data • Contribute to the writing of research proposals, reports and journal articles • Analysis and write up of research data • Undertake appropriate administrative tasks • Work independently as well as within a team |
|---|---|

Organisational Responsibilities

- | | |
|---|--|
| <ul style="list-style-type: none"> • A commitment to meeting and exceeding AEIOU's vision and mission • To adopt and embrace the organisation's values • To promote AEIOU to the broader community • Utilise AEIOU resources and equipment efficiently, economically and honestly | <ul style="list-style-type: none"> • Ensure conduct reflects our commitment to a workplace that is inclusive and free from harassment • To comply with AEIOU policies and procedures at all times, including Workplace, Health and Safety directives and practices |
|---|--|

Key Selection Criteria

- | | |
|--|--|
| <p><u>Essential</u></p> <ul style="list-style-type: none"> • Bachelor degree (Honours) in psychology, special education, or allied health. • Experience in conducting quantitative or qualitative research • Experience in working with young children • Knowledge and experience in conducting assessments with young children • High level of organisational skills such as prioritisation, time management and co-ordination of resources | <p><u>Desirable</u></p> <ul style="list-style-type: none"> • Experience or high level knowledge of autism • Experience in working with families |
|--|--|

- | | |
|--|--|
| <ul style="list-style-type: none">• Demonstrated high level of communication skills including verbal skills, report writing skills and proofreading• Ability to travel within the State and interstate to conduct assessments | |
|--|--|